



AGENDA ITEM 9

GREATER BRISLINGTON NEIGHBOURHOOD PARTNERSHIP

21st January 2013

Report of: Ariaf Hussain, Area Coordinator, Neighbourhoods

Title: Area Coordinators' Update Report

Contact: 0117 922 3218 / ariaf.hussain@bristol.gov.uk

RECOMMENDATIONS

To note the contents of the report.

1. Neighbourhood Forum update

The last meeting of the joint Forum was held on the 12 November 2012. The meeting attended by 27 local residents raising a number of Issues Including; - Communication around the development of the Wicklea Site development; Weight restrictions and blocked gully on West Town Lane:Traffic, including lighting and roads Issues and Environmental Issues, including overgrowth.

The Forum Meeting was followed by a very successful AGM of the Brislington Community Partnership.

Brislington Enterprise College – Forum – Next Steps

Following the very successful meeting with students at a Forum at the end of summer term, the NDO and Senior Youth Worker for the area met with the Student Senate and Principal of BEC to agree next steps. A sub group of the Senate have arranged to meet again on the 10th January 2013 with the NDO and Senior Youth Worker to plan their next Forum and look at ways of addressing some of the Issues raised previously.

Flooding/ Drainage in School Road / Jean Road

A group of concerned residents met on site at Jean Road with officers to explain the complex issues of flooding in their area. A number of contributing factors were involved and the officers agreed a number of actions to help prevent further stress and concern to the residents these included ensuring the local stream remains unblocked and cleaning of gullies. The residents have been invited to attend partnership meetings.

Community Development

Hungerford Road Community Association

The NDO has been meeting regularly with Hungerford Road Community Association, putting them in touch with VOSCUR to support them to consider how their organisation develops into the future. Hungerford Community Assosiation have submitted an application to the National Lottery - Awards for All – to provide much needed funds to build accessible toilets.

CATT – Community Transport and the new South Bristol Hospital

In the autumn together with Staff from the CATT team we visited a number of groups including the over 50's in St Peters to promote the new CATT Community Bus service. The service provides transport to those who find it difficult to get to the new hospital enabling them to keep valuable hospital appointments.

More information about the actions from all of the forums can be found on www.myneighbourhoodbristol.com

2. Clean and Green - devolved funding requests:

The following requests have come in for the devolved Clean and Green budget:

- Installation of a metal bench (includes concrete base) by the Childrens Play Area for Arnos Court Park, donated by the Plymouth Brethren Christian Church - £370
- Community Payback to assist Community clear up of St Annes Wood on 16th February and Nightingale Valley on 23rd March requested by Rowan Matthiessen of Discover Brislington Brook - £200

3. Bristol Youth Links

Bristol Youth Links (BYL) is a commissioned suite of integrated services for children and young people aged 8-19 years (and up to 24 years for those with learning difficulties). This plan describes commissioning arrangements.

The services to be commissioned will be marketed and promoted under the umbrella brand of Bristol Youth Links and will be designed to improve outcomes by building resilience and protective factors by:

- Intervening early;
- Providing appropriate advice, guidance and support;
- Providing personalised and targeted support for young people at risk or difficulty;
- Reducing disruption for children and young people at transition points in their lives;
- Providing ways for children and young people to have their say in developing services that meet their needs.

A meeting is planned for the Neighbourhood Partnership to meet with the Learning Partnership West as the providers of the service as follows.

Attached (Appendix 9a) is the presentation that will be delivered by Learning Partnership West at the meeting.

The Neighbourhood Partnership will be advised of the meeting date and venue.

4. Community Learning Needs Survey and Event

Local authorities, colleges and other organisations are working together to improve community learning in the West of England. We are gathering information from local residents in Brislington East and West wards.

If you would like to give your views about the adult community learning you want to see in the area - you can contribute by completing a survey monkey, which can be found on <https://www.surveymonkey.com/s/GT232MT>

If you have any problems using the survey monkey link please contact Sarah Wilson on sarah.wilson@bristol.gov.uk or ring Sarah on 0117 9039808.

The completed paper questionnaires can be sent to Hannah Parker, Learning Communities Team, The Park, Daventry Road, Knowle Bristol BS4 1DQ. If you need hard copies please do let Hannah Parker know.

There is also a chance to come to a Community Learning Planning Event to look at priorities for community learning in your area, on Monday 18th February at St Peters Church, Allison Road, Brislington (1.00pm - 3.00 pm).

To book your place please get in touch with Hannah Parker, Learning Communities Team on 0117 9039750.

Attached briefing (Appendix 9b) provides further background information.

5. Meeting dates 2012-2013

Meeting dates (date, start time and venue) have been set for 2012-13. They are as follows (please note the changes to the dates due to requests from the Neighbourhood Partnership to have forum meetings every 2 months and that there is enough time between Wellbeing Application closing, assessment and NP meeting date):

Neighbourhood Partnership:

18th March 2013, 7.00pm (St Peters Methodist Church)

Neighbourhood Forums:

11th March 2013, 7.00pm (**tbc – Holymead Junior School**)

NP Briefing/Agenda setting:

5th March 2013, 3.00pm (Brunel House, 3rd Floor)

Well Being Panel Meeting

28th February 2013, 6.15pm

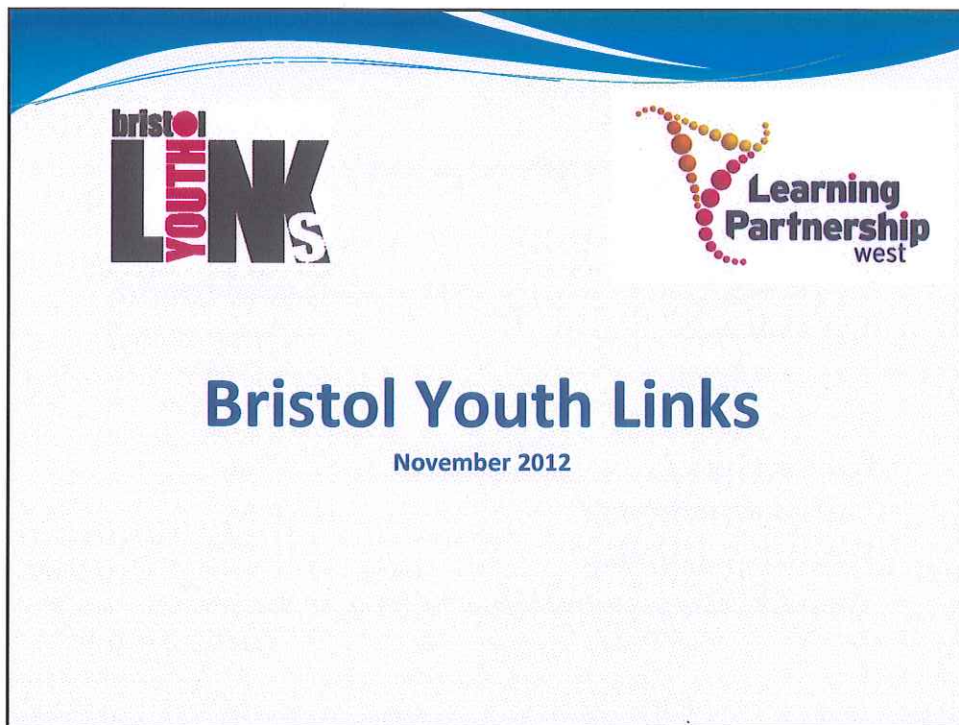
changed to:

4th March 2013, 6.00pm (St Peters Methodist Church)

5. Meeting dates 2013-2014

Meeting dates (date, start time and venue) need to be set for 2013-14. The following dates are being proposed:

To be tabled at meeting



The image shows the bottom half of a slide. At the top left is the '1625 Independent People' logo, consisting of a grid of colored dots. At the top right is the 'LPW' logo, a stylized 'Y' shape made of dots. The central text 'Who are we?' is in a large blue font. Below it is a bulleted list of four items: 'Learning Partnership West', 'Barnardo's', '16-25 Independent People', and 'TBG Learning'. At the bottom left is the 'Believe in children Barnardo's' logo, with 'Believe in children' in green and 'Barnardo's' in black. At the bottom right is the 'TBGLearning' logo, with 'TBGLearning' in blue and red, and 'Improving Lives Through Learning' in red below it.

Who are we?

- Learning Partnership West
- Barnardo's
- 16-25 Independent People
- TBG Learning

Believe in children
Barnardo's

TBGLearning
Improving Lives Through Learning

What we offer

- Targeted support to Children and Young people
- Supporting Young People into education, employment and training (EET)
- Play/family work
- Housing support
- Peer Mentoring
- Engaging Volunteers
- Foundation Learning
- Contract Management & Quality Assurance

BYL services

- Targeted 1:1 support for NEET young people
- Weekly Job Clubs held in communities
- Aspiration Events delivered in community venues
- IAG and SRE delivered in schools
- Play Work – after school, weekends and holidays
- Positive activities such as residential, trips and visits for targeted groups
- Access to peer mentoring support for children & young people
- Dedicated young peoples forums

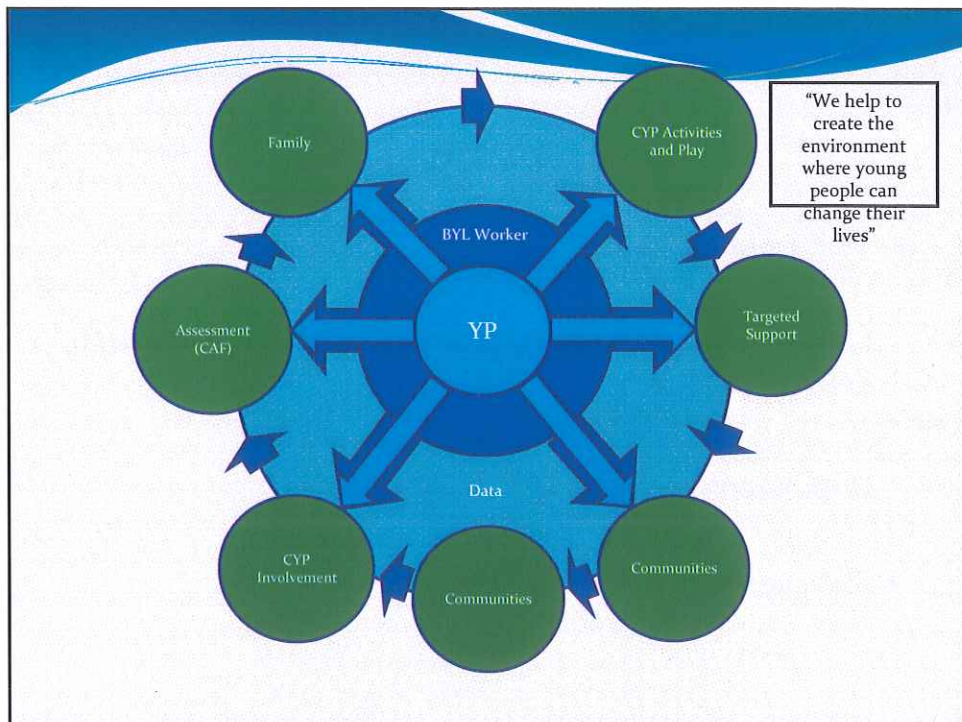
Our goals and visions

This consortium has been brought together by a determination to combine and improve services for CYP in Bristol.

Our vision is to:

- Work closely with BCC, schools, CVS and communities in Bristol to contribute to community cohesion - combining the very best of public sector and community approaches
- Develop and deliver quality and accessible services which provide excellent value for money
- Support CYP and their parents/carers to overcome barriers and help them to move forward positively.

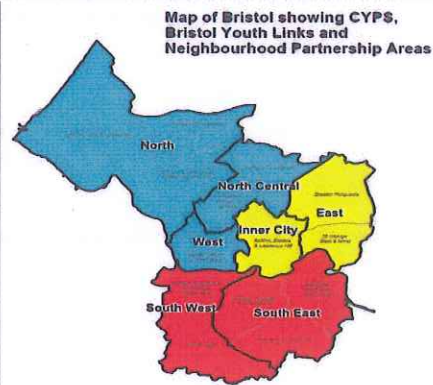
We believe that if CYP feel secure and have access to play/activities, mentoring and support, they can thrive.



Geographical Area

Providing services
across 5 area's in Bristol

Lot 1 - North
Lot 2 - North Central
Lot 3 - Inner City
Lot 6 - South East
Lot 7 - South West



Next Steps

- TUPE Transfers
- Liaising with VCS organisations to discuss community delivery
- Implementing delivery in January 2013
- Full service delivery by April 2013

Neighbourhood Committees and local residents shaping Community Learning Services

What is 'community learning'?

Community learning is the term used to describe mainly non-accredited part-time learning for adults. Unlike formal adult provision, community learning tends to be developed 'bottom up', delivered in community locations, and acts as a 'first step' to a wider continuum of learning. Many types of organisations are involved in the delivery of community learning, including self organised learning groups. Approximately 75% of government funding for this type of learning is allocated to local authorities.

Bristol City Council community learning services

The Learning Communities Team (LCT) – based in CYPS – receives funding from the Skills Funding Agency to run targeted courses for adults over 19 years who do not have level 2 qualifications. Courses are designed to support learner progression to further learning, volunteering and work. Courses are run in over 150 locations in the most disadvantaged areas and include: learning for work; learning for personal and community development; family learning. Many learners face barriers to formal learning.

The Libraries Adult Learning Service runs universal 'leisure learning courses' including an extensive arts & crafts, languages, cookery and general interest programme. Courses are primarily delivered from Stoke Lodge and in North West Bristol. Many learners are over 60. This programme is funded through a combination of learner fees and Council funding.

A number of other teams in the Council run or deliver community learning e.g. Parenting Team, Economic Regeneration, Museum Service etc.

Lots of external groups and organisations run community learning courses – FE Colleges, Voluntary and Community Groups, Trade Unions, Local Businesses, Self Organised Groups etc.

Government supported community learning

In 2010/11 the coalition government carried out a review of community learning funding. BIS produced updated guidance which outlined the purpose of government funded community learning:

- Bring new opportunities and improving lives, whatever peoples circumstances
- Promote social renewal by bringing local communities together to experience the joy of learning and pride that comes with achievement
- Maximise the impact of community learning on the social and economic well being of individuals, families and communities

The government has published a set of objectives for government-supported community learning (see appendix 1).

As part of their review process, local areas were invited to apply to be one of 15 national community learning trust pilots. These pilots are expected to develop new collaborative models to widen and grow participation in learning.

Community Learning Trust Pilots

In July 2012, the West of England Community Learning Partnership (Bristol, North Somerset and South Gloucestershire Councils, City of Bristol College, Weston College, Stroud and South Gloucestershire College and the WEA) was selected as one of the 15 pilot trusts. One of the expectations of this high profile initiative is that there is increased community involvement in shaping a co-ordinated community learning offer so that local learning services are “community-led and provider-backed”.

The overarching aims for 2012/13 are

- Development of a co-ordinated and holistic community learning offer
- Maximising resources for community learning
- Increasing community ownership and involvement

Rationale for working with Neighbourhood Committees and Neighbourhood Partnerships

The local authority is expected to work with other community learning trust partners to “devolve planning and accountability to neighbourhood/parish level, with local people involved in decisions about the learning offer.”

All Government funded community learning must be delivered against a national set of funding guidelines and criteria with annual targets, which have to be achieved. However, as long as these are adhered to, then there is an opportunity to involve additional stakeholders to identify learning priorities at a NP level, linked to NP priorities which will then result in a customised a menu of learning which best suits the needs of the area.

In Bristol this offers an opportunity to devolve more influence to the Neighbourhood Committees and we are now working towards piloting this approach in 3 NP areas,

- Avonmouth and Kingsweston – this NP round
- Greater Fishponds - 2013 NP round
- Brislington East and West – 2013 NP round

How it will work

The Neighbourhood Partnership and Learning Communities Team will work together to support this work.

A councillor briefing session will be held on December 18th at 6pm at the Council House to provide more information regarding the West of England Community Learning Trust Pilot.

The Neighbourhood Committee has already agreed local priorities and an action plan to achieve these. This work will fit into and compliment these local priorities to strengthen our approach and assist the Neighbourhood Partnership to achieve its outcomes.

To supplement this plan, the Learning Communities team are currently consulting widely in the areas using a survey monkey survey (<https://www.surveymonkey.com/s/GT232MT>). Questionnaires will also be distributed by service providers to ensure a good spread.

In each of the Pilot areas a focus group made up of Councillors, key stakeholders and NP representatives will look at the results from this survey plus learning data from previous years, linking this to local priorities. The group will then look at the available funding and in the framework of the national criteria make recommendations, which will be presented at the NP to the Neighbourhood Committee.

Once the Neighbourhood Committee has agreed the priorities then the Learning Communities Team will work with other local agencies to procure and organise learning to address them over the spring.

This will be monitored and performance management information will be reported back quarterly through the AC report and annually at the AGM via a report of the local Learning Communities Development Worker. This process will then be repeated yearly linked to the course planning and commissioning cycle.

For more information please contact Jane.Taylor@bristol.gov.uk